

経済産業大臣杯第46回全日本実業団産業別ボウリング選手権大会 部門大会(キョーイチボウル宇治)



Oil Pattern Distance: 42 Feet	Reverse Brush Drop: 38 Feet	Oil Per Board: 50 uL
Forward Oil Total: 19.85 mL	Reverse Oil Total: 10.7 mL	Volume Oil Total: 30.55 mL
Forward Boards Crossed: 397 Boards	Reverse Boards Crossed: 214 Boards	Total Boards Crossed: 611 Boards

▲	Start	Stop	Loads	Speed	Crossed	Start	End	Feet	T.Oil
1	3L	3R	3	10	105	0.0	2.8	2.8	5250
2	5L	5R	4	14	124	2.8	10.7	7.9	6200
3	7L	7R	3	18	81	10.7	18.3	7.6	4050
4	11L	11R	3	22	57	18.3	27.6	9.3	2850
5	13L	13R	2	22	30	27.6	33.8	6.2	1500
6	2L	2R	0	22	0	33.8	42.0	8.2	0

▲	Start	Stop	Loads	Speed	Crossed	Start	End	Feet	T.Oil
1	2L	2R	0	30	0	42.0	33.0	-9.0	0
2	15L	15R	1	22	11	33.0	29.9	-3.1	550
3	14L	14R	3	18	39	29.9	22.3	-7.6	1950
4	12L	12R	3	18	51	22.3	14.7	-7.6	2550
5	10L	10R	3	14	63	14.7	8.8	-5.9	3150
6	8L	8R	2	14	50	8.8	4.9	-3.9	2500
7	2L	2R	0	10	0	4.9	0.0	-4.9	0

Conditioner:
Type In or Select
One

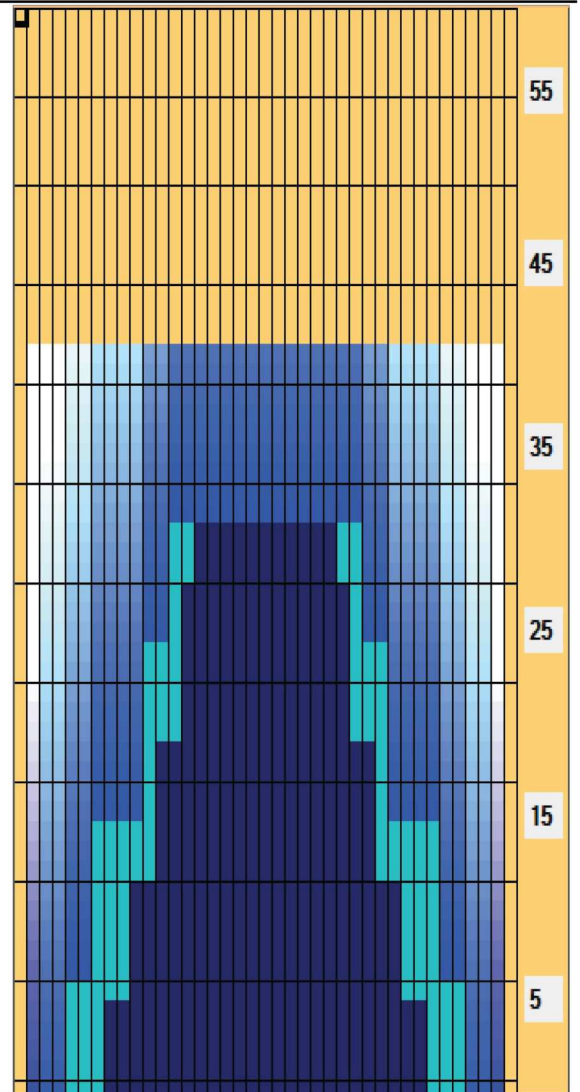
TransferType:
Type In or Select
One

Forward

Reverse

Combined

Buff



Item	3L-7L:18L-18R	8L-12L:18L-18R	13L-17L:18L-18R	18L-18R:17R-13R	18L-18R:12R-8R	18L-18R:7R-3R
Description	Outside Track:Middle	Middle Track:Middle	Inside Track:Middle	Middle: Inside Track	Middle:Middle Track	Middle:Outside Track
Track Zone Ratio	4.5	1.73	1.04	1.04	1.73	4.5

